

2021 ANNUAL REPORT

PUBLIC ADVOCATES IN COMMUNITY RE-ENTRY

FELONIES

DON'T

DEFINE

FUTURES



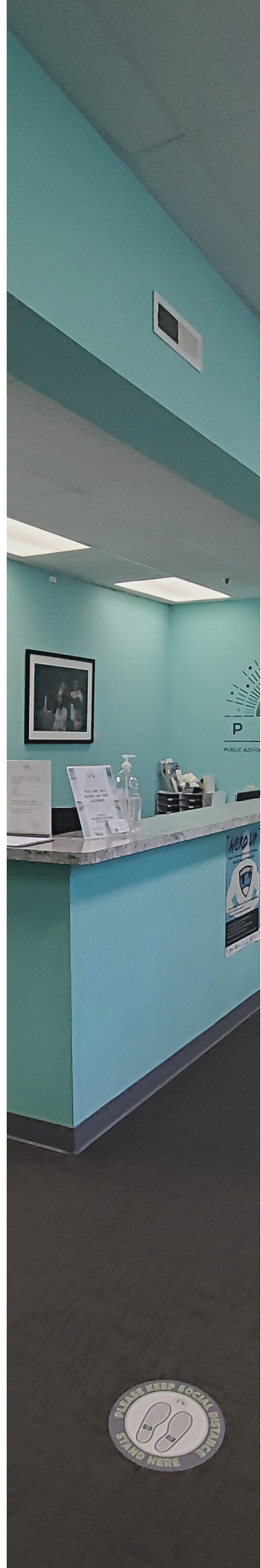
ABOUT US

MISSION: To provide a variety of services to individuals and families impacted by the justice system to ensure they are afforded the opportunity to lead productive and responsible lives in their communities.

VISION: To ensure that people returning to the community from incarceration have the tools and resources to successfully re-enter; to promote public safety through effective re-entry; and to enhance community stabilization through reduced crime and increased productivity.

OUR VALUES:

- **SERVICE** - Our primary goal is to help people in need and to address social problems. Our employees elevate service to others above self-interest.
- **SOCIAL JUSTICE** - We challenge social injustice by pursuing social change, particularly with and on behalf of vulnerable and oppressed individuals and groups of people.
- **DIGNITY AND WORTH OF THE PERSON** - We respect the inherent dignity and worth of the person and treat each person in a caring and respectful fashion, mindful of individual differences and cultural and ethnic diversity.
- **IMPORTANCE OF HUMAN RELATIONSHIPS** - We recognize the central importance of human relationships and that they serve as an important vehicle for change.
- **INTEGRITY** - We behave in a trustworthy manner, continually aware of the organization's mission, values, ethical principles, and ethical standards and practice in a manner consistent with them.
- **COMPETENCE** - We practice within our areas of competence and develop and continually strive to increase our professional knowledge and skills and to apply them in practice.



FROM OUR EXECUTIVE DIRECTOR

At its core, our mission is to serve those impacted by the criminal justice system, from those recently released with nothing more than the clothes on their back to those with families living with a decade old felony. For more than 60 years, PACE has established a strong foundation and proven track record of success providing comprehensive services that promote successful re-entry and public safety.

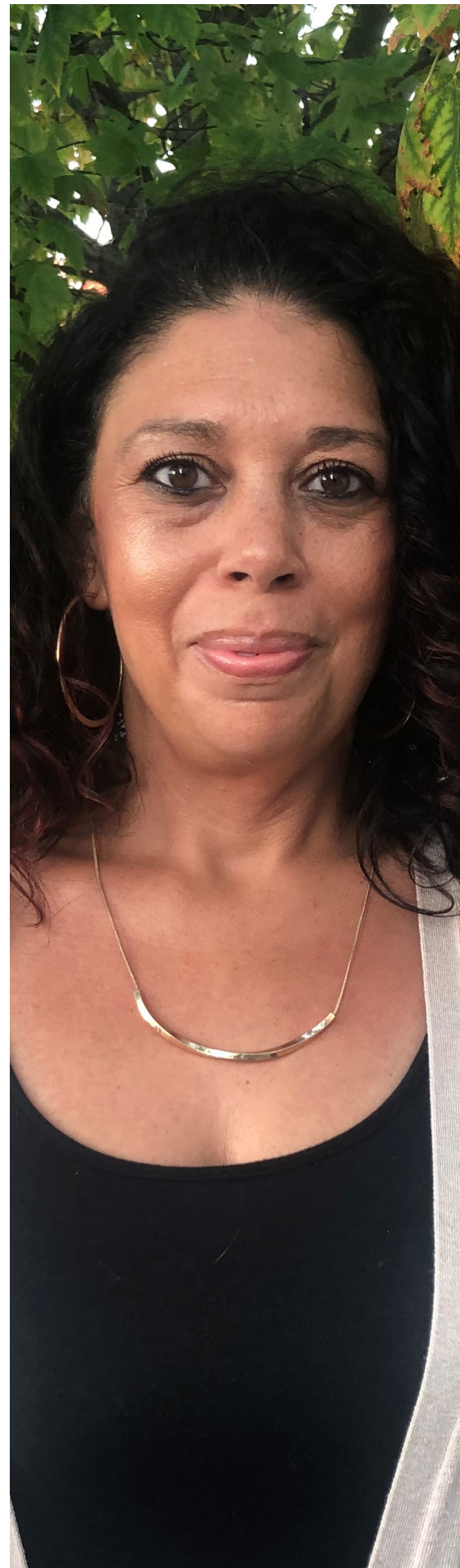
PACE is uniquely positioned to provide individuals with resources that meet all their needs no matter where they are in the phases of re-entry. This is due in large part to our strategic partnerships with entities in Indiana that are committed to the success of our programs. In 2021, we were fortunate to pilot innovative interventions to further promote effective reintegration. We worked with the Indiana Women's Prison to pilot trauma-based re-entry services; partnered with Just Leadership USA to train individuals with lived experience to advocate for criminal justice reform in the State of Indiana; contracted with an Occupational Therapist to address intergenerational trauma through two-generational programming; and partnered with IUPUI to facilitate an Inside Out class to create forward thinking around mass incarceration and system change.

After 10 years in the Martindale-Brightwood neighborhood, we have outgrown our office space leading to relocation planning to meet the growing need for our services. PACE serves roughly 2,500 clients annually, while nearly 5,000 re-enter the Central Indiana community each year. Our goal in 2022, is to raise \$1 million to move to a new facility that would dramatically increase the size and number of programs we are able to offer to our clients. To continue making a difference in the lives of individuals affected by felonies, it is vital for this campaign to be a success. We need your help now more than ever. Please join us.



RHIANNON EDWARDS

Executive Director



WHO WE SERVED IN 2021

1,883

active clients

832

new clients

54%

Percent of PACE
clients with children

16%

Percent of clients
homeless at intake

38%

Percent of clients
living in 46201 and
46218 ZIP codes
alone

86%

Percent of clients
with income under
\$10,000 annually at
intake

33%

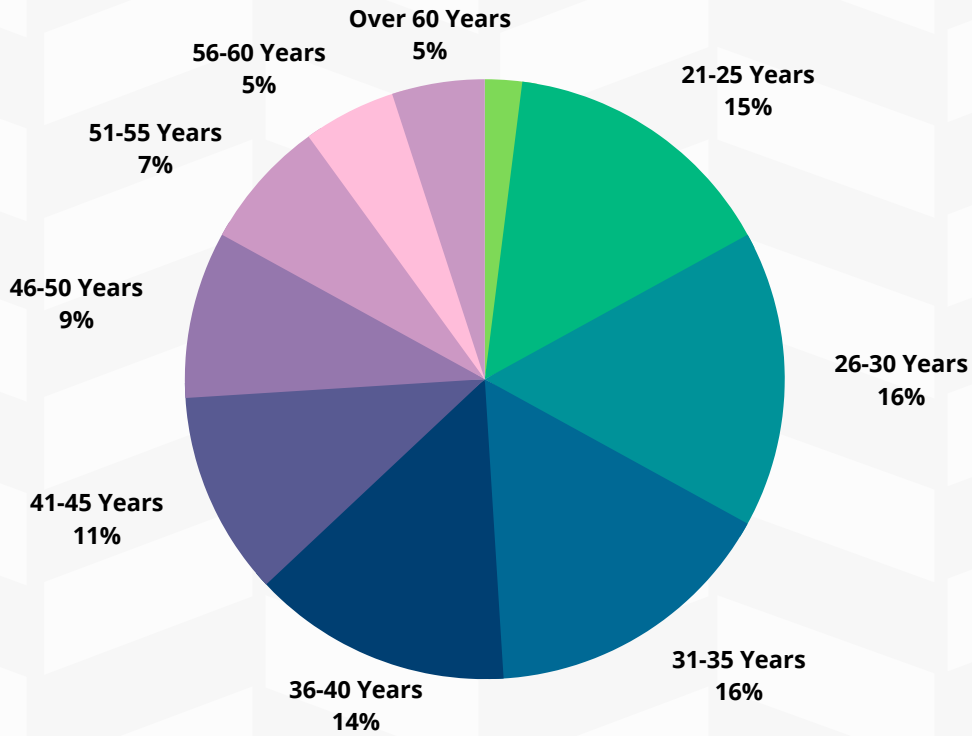
Percent of clients
who arrive at PACE
with no high school
diploma

51%

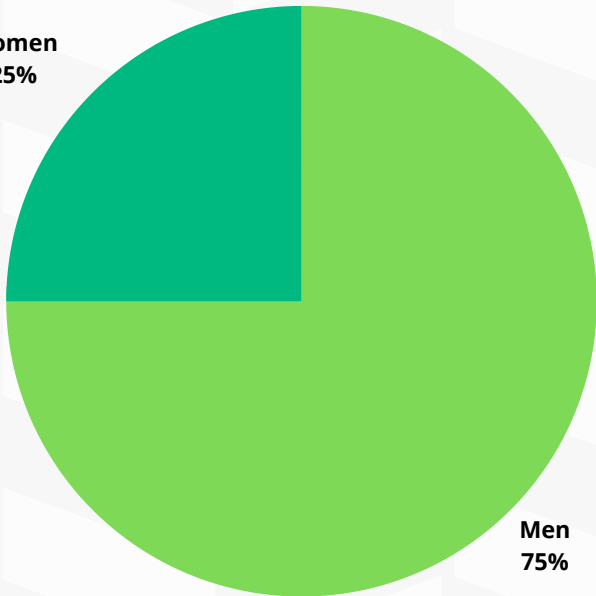
Percent of clients
who receive
government health
insurance

WHO WE SERVED IN 2021

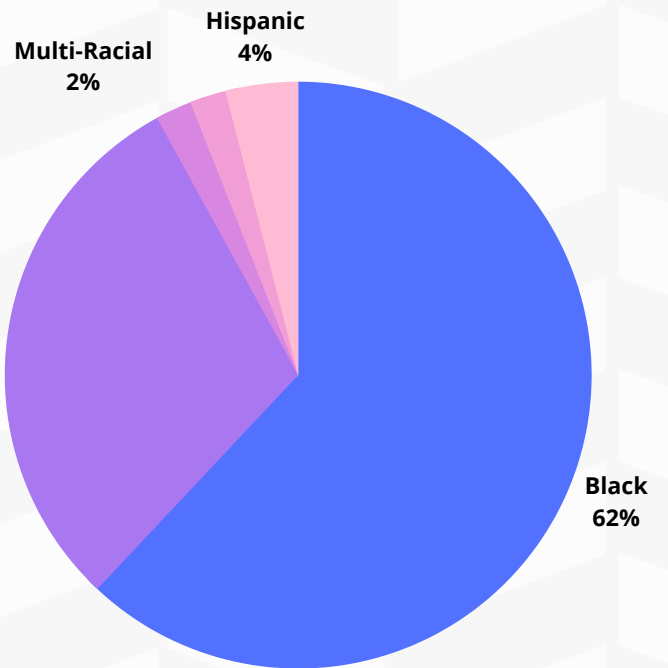
Client Age



Women
25%



Client Gender



Client Race/Ethnicity

PACE CORE SERVICES



CAREER SERVICES

PACE is a Center for Working Families site providing a variety of career services, including our Advancing Your Career workshop, resume writing, training for in-demand careers in construction, advanced manufacturing, and logistics, career networking, services specialized for youth 24 and under, and placement with over 150 preferred employers.

RECOVERY SERVICES

We know that substance use disorder is a barrier for many exiting incarceration. To meet that need, we offer peer recovery coaching, support groups, harm reduction services, referrals to mental health and inpatient treatment options, and Naloxone distribution.

BASIC NEEDS

Many reentering residents do not have insurance, vital documents, and other basic needs that most of us take for granted. We help our clients to enroll in government income support programs, coordinate care, and secure documentation needed for everyday life.

PRE-RELEASE

Connecting individuals with resources prior to release is fundamental for effective re-entry. We work with individuals at the Indiana Women's Prison and Duvall Residential Center to begin preparing for re-entry, as well as monthly orientations at the Marion County jail.

AND MUCH MORE

PACE helps individuals retain housing, hosts weekly Moral Reconciliation Therapy (MRT) workshops, offers an on-site pantry, provides financial coaching, and continually advocates for effective reentry across all aspects of the system.

OUR IMPACT

553

Received Assistance
Enrolling in
Healthcare or
Coordinating Care

120

Received Housing
or Utilities
Support

256

Successfully Placed
with Employers

445

Received
Recovery Support
Services

OUR IMPACT

14%

**PACE Client
Recidivism Rate**

38%

**Indiana 2020
Recidivism Rate**

51%

**Marion County 2020
Recidivism Rate**

49%

**National
Recidivism Rate**

CLIENT SUCCESS



Cindy came to PACE in August 2014, unemployed and staying with family members along with her two children. The living environment was not conducive to her reentry, and she and her children moved to a shelter for a few weeks to await a more stable, independent housing situation.

Soon she was able to move to a transitional housing program, and PACE connected her with an employment opportunity starting at \$14 per hour. PACE also helped her to locate a 2-bedroom house for rent that was within her means, where she remained for 3 years. In 2017 Cindy began a new job that paid \$17.12 an hour.

Today Cindy has a job earning \$24 per hour with benefits and has purchased her first home. She has also met and married her soulmate and worked with PACE to have her record expunged in September 2021. Our team is extraordinarily proud of Cindy and honored to have supported her in her highly successful reentry into the community.

INNOVATION

Expanding Pre-Release



PACE has long conducted pre-release services at the Duvall men's work release facility. However, thanks to the generosity of the United Way of Central Indiana, we were able to pilot the expansion of these services to the Indiana Women's Prison, providing group and individual counseling, helping to reconnect family members, and assisting residents with ensuring they had necessary supports in place (such as vital documents) to ensure a smoother reentry into the community. Our strategy is to continually expand our pre-release footprint throughout Indiana correctional facilities.

Advancing 2-Gen Programming



The study of intergenerational trauma has grown dramatically over the last few years. Traumatic life experiences not only impact the individual, but the family unit as well. In 2021, UWCI awarded PACE a capacity-building grant to pilot Two-Generational ("2-Gen") programming through their Family Opportunity Fund. Our on-site occupational therapist collaborated with several other team members to develop a menu of occupational therapy-based interventions to support PACE clients and family members impacted by experiences with the justice system. We are excited to roll out this programming to the first cohort in Spring 2022, and to further develop team members' trauma-informed and strengths-based approaches.



ADVOCACY DAY

PACE dramatically expanded its advocacy work in 2021 through both the addition of advocate training and our first Advocacy Day at the Indiana Statehouse in partnership with State Representative Robin Shackelford, where we hosted programming about the impacts of mass incarceration and met with many lawmakers and stakeholders to advocate for a more just Indiana.

RECOVERY CELEBRATION

Oftentimes, individuals who experience a mental health or substance use disorder feel isolated and alone. Yet every year, millions of Americans experience these conditions. Mental health and substance use disorders affect people of all ethnicities, genders, geographic regions, and socioeconomic levels, and they need to know that help is available. These individuals can get better, both physically and emotionally, with the support of a welcoming community. That's why we hosted our 4th annual Shackelford Steps with Recovery 5K Walk and PACE Recovery Celebration in September, featuring a variety of educational and entertainment events to honor individuals and families who are in long-term recovery.

HOUSING DISPARITIES

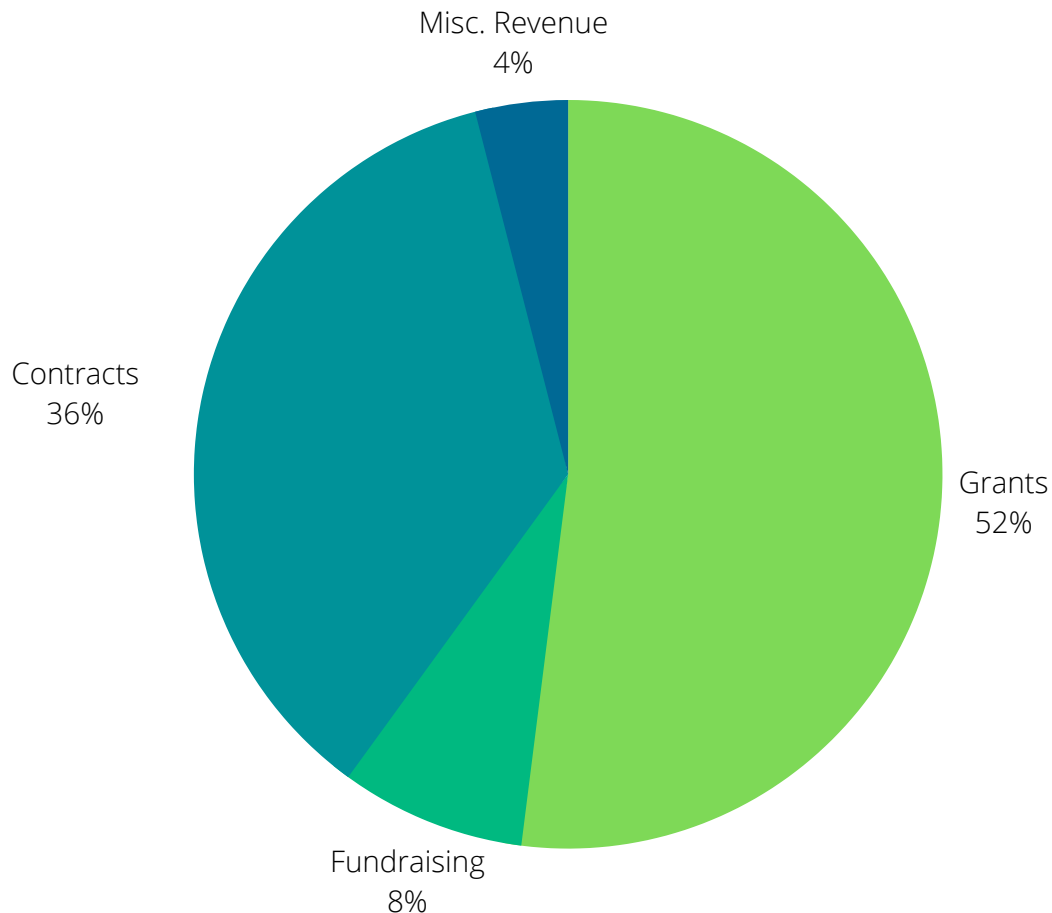
Housing for those with justice involvement remains a significant challenge to successful reentry. In 2021, 50 Emergency Housing Vouchers were made available as part of a pilot program. We were also given the opportunity to help divert clients who are at risk of homelessness. While we are limited in the number of individuals we can serve through this initiative, we are excited about the anticipated outcomes that can be utilized to leverage change for future housing opportunities.

RECOVERY WORKS

PACE staff have long known the impact of substance use disorder on those reentering the community. Death from a drug overdose is 129 times more likely in the first two weeks of release from incarceration. In 2021, PACE was selected as the new administrator of the State of Indiana's Recovery Works program. Recovery Works is a state program designed to provide support services to those without insurance coverage who are involved with the criminal justice system. This is meant to increase the availability of specialized mental health treatment and recovery services in the community for those who may otherwise face incarceration, and supplements community supervision strategies to decrease recidivism. We have added 5 additional staff to date to support this initiative.

2021

HOW PACE IS FUNDED



HOW YOU CAN SUPPORT PACE IN 2022

Volunteer or Participate in Recovery Celebration on August 27th

Attend and Bid at Artspoken on October 27th

Make a tax-deductible donation or purchase PACE apparel and merchandise at paceindy.org

OUR FUNDERS AND DONORS

Our endless gratitude to the organizations listed below, as well as the individual donors who supported PACE in 2021. We could not do this work without their generosity.

- United Way of Central Indiana
- Central Indiana Community Foundation
- Indiana Dept. of Family and Social Services - Dept. of Mental Health and Addiction
- Indiana Department of Health
- Marion County Community Corrections
- Christel DeHaan Foundation
- Notre Dame Wilson Sheehan Lab for Economic Opportunities
- Indianapolis Public Transportation Foundation
- The Indianapolis Foundation
- Community Action of Greater Indianapolis
- Central Indiana Community Foundation
- Marion County Prosecutor's Office
- State Rep. Robin Shackelford
- Anonymous Foundation
- Mental Health America - Indiana
- Frank and Cheryl Sullivan
- Overcoming Church
- Harrison Center
- Aspire Indiana Health
- Paige Electric
- ERI
- SerVaas
- Karen Wurster
- Bill West
- Marshall Shackelford
- Core Planning (J.S. Held)
- MHS
- Barnes & Thornburg
- Eastern Star
- Colts Foundation
- PNC Foundation
- First Financial
- Regions
- EmployIndy
- Indiana Red Cross

OUR PARTNERS

We are also so thankful for our community partners who help us to ensure that all of our reentering neighbors' needs are met.

- Overdose Lifeline
- Second Helpings
- Dress for Success
- Covering Kids and Families of Indiana
- Mental Health of America - Indiana
- Evolve Group, Inc.
- Indiana Construction Roundtable
- JustLeadership USA
- Indy Chamber
- Edna Martin Christian Center
- Trusted Mentors
- Indiana Recovery Network
- Marion County Reentry Coalition
- Indiana HIDTA
- Indiana Red Cross
- IUPUI
- EmployIndy
- Indiana Legal Services
- Horizon House
- Coalition for Homelessness Intervention and Prevention
- Aspire
- Training for Success LLC
- Marian University
- Catapult Indiana - Conexus Indiana

OUR STAFF

Rhiannon Edwards, Executive Director
Sharon Love, Director of Recovery Services
Yvonne Smith, Director of Employment Services
Gina Fears, Asst. Director of Recovery & Community Services
Karen Hensley, Director of Operations
Claire Lash, Office Manager
Shaffon Browder, Youth Employment Services Manager
Kristina Byers, Program Manager
Erica Ashford, Program Manager
Tawnya McCrary, Financial Coach & Youth Employment Services Consultant
Breea Vest, Occupational Therapist
Jeannie Reed, Lead Peer Recovery Coach
Angela Phelps, Peer Recovery Coach
Cierre Maxey, Employment and Education Coach
Fred Briggeman, Employer Engagement Coach
Brittney LaBroi, Youth Employment Services Career Coach
Jamie Langley, Recovery Works Regional Liaison
Courtney Jennings, Recovery Works Regional Liaison
Lenita Briscoe, Recovery Works Regional Liaison

OUR BOARD

Bill West, Chair
Shamika Anderson, Vice Chair
James Newton, Treasurer
Vop Osili, Secretary
Jeanine Kerridge
Marshall Shackelford
Ken Beache
Lew Weiss
Karen Wurster
Patrick Callahan
Ashley Allen
Angie Boarman
Samantha DeWester
Danielle Taylor



**2855 N. Keystone Ave, Ste. #170, Indianapolis IN 46218
(317) 612-6800 | pace@paceindy.org | www.paceindy.org**